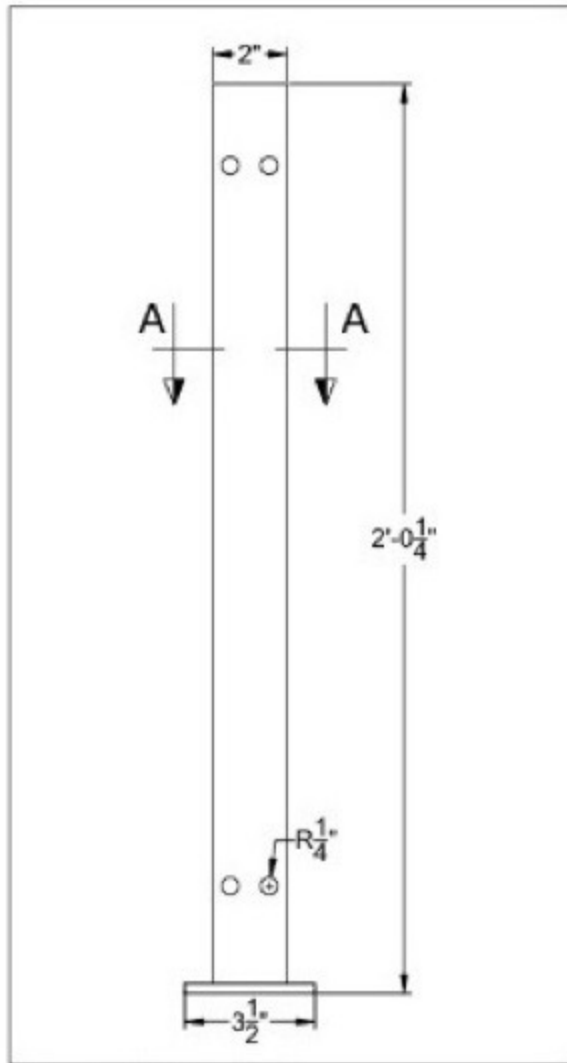
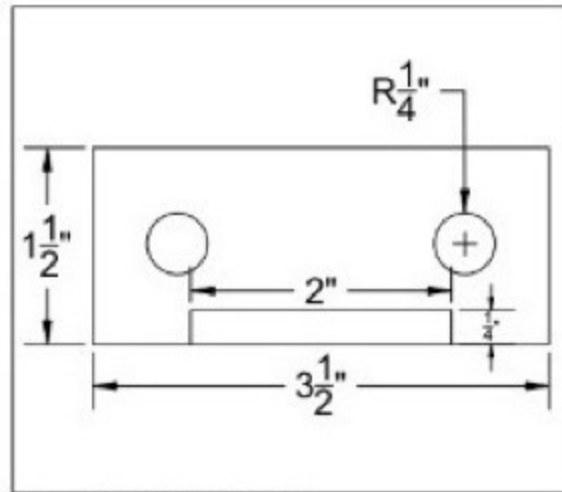


# Anchor Post



1 ANCHOR ELEVATION Scale: NTS



2 SECTION DETAIL: A-A Scale: NTS

## Notes:

Base = 1/4" x 1 1/2" Flat Steel

Back = 1/4" x 2" Flat Steel

**Flatblack enamel paint.**

PROJECT:

ADDRESS:

TITLE:  
ANCHOR POST UP TO 8'

DETAIL:

Notes, please read:

- To be used in conjunction with min 3" x 3/8" wedge anchors.
- Metal stud to be screwed directly to Anchor Post with min 6 Tec framing screws.

REV#: 01 DATE: 2011.04.01

DRAWN: CH. APPROVED:

SCALE: NTS PAGE: 1 OF 1