

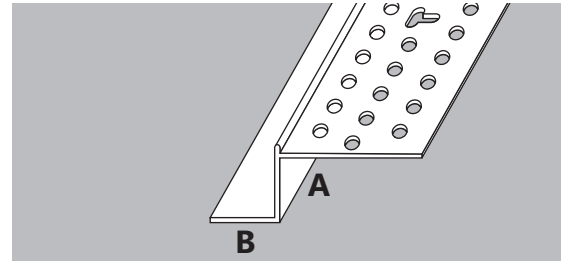
TRIM-TEX

Architectural Z Shadow Bead

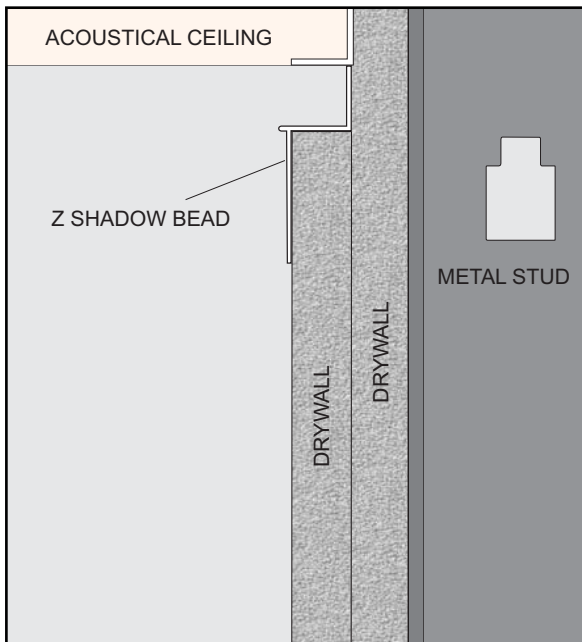
Used to create a reveal effect when butting up to door jambs, base trim, ceilings, light boxes & other interior architectural components.

Fits common drywall sizes of 1/2" and 5/8".

UV stabilized for use in exterior applications.



STOCK NUMBER	A x B SIZE	LENGTH	PCS PER BOX
AS5510	1/2" x 1/2"	10'	50
AS5610	1/2" x 3/4"	10'	50
AS5810	5/8" x 1/2"	10'	50
AS6010	5/8" x 5/8"	10'	50
AS5910	5/8" x 3/4"	10'	50



Installing Z Shadow Bead

Snip your Z Shadow Bead to length and dry fit it into place to ensure an accurate installation.

Install the bead with a combination of Trim-Tex 847 Spray Adhesive and 1/2" divergent staples.

For the strongest bond, spray the bead & the drywall with 847 Spray Adhesive. Pressure the bead into place with your **FREE** installation tool or the handle of your mud knife.

Staple the mud legs of the bead every 6" - 8".

Finish by mudding, sanding and painting your Z Shadow Bead as you normally would. Priming is not required and always use a high quality paint.

To improve the bondability of your drywall compound, use Trim-Tex Mud-Max Drywall Compound Additive.

Ceiling Detail



Baseboard Detail



Window Detail



Stay Connected



www.trim-tex.com • 1-800-874-2333