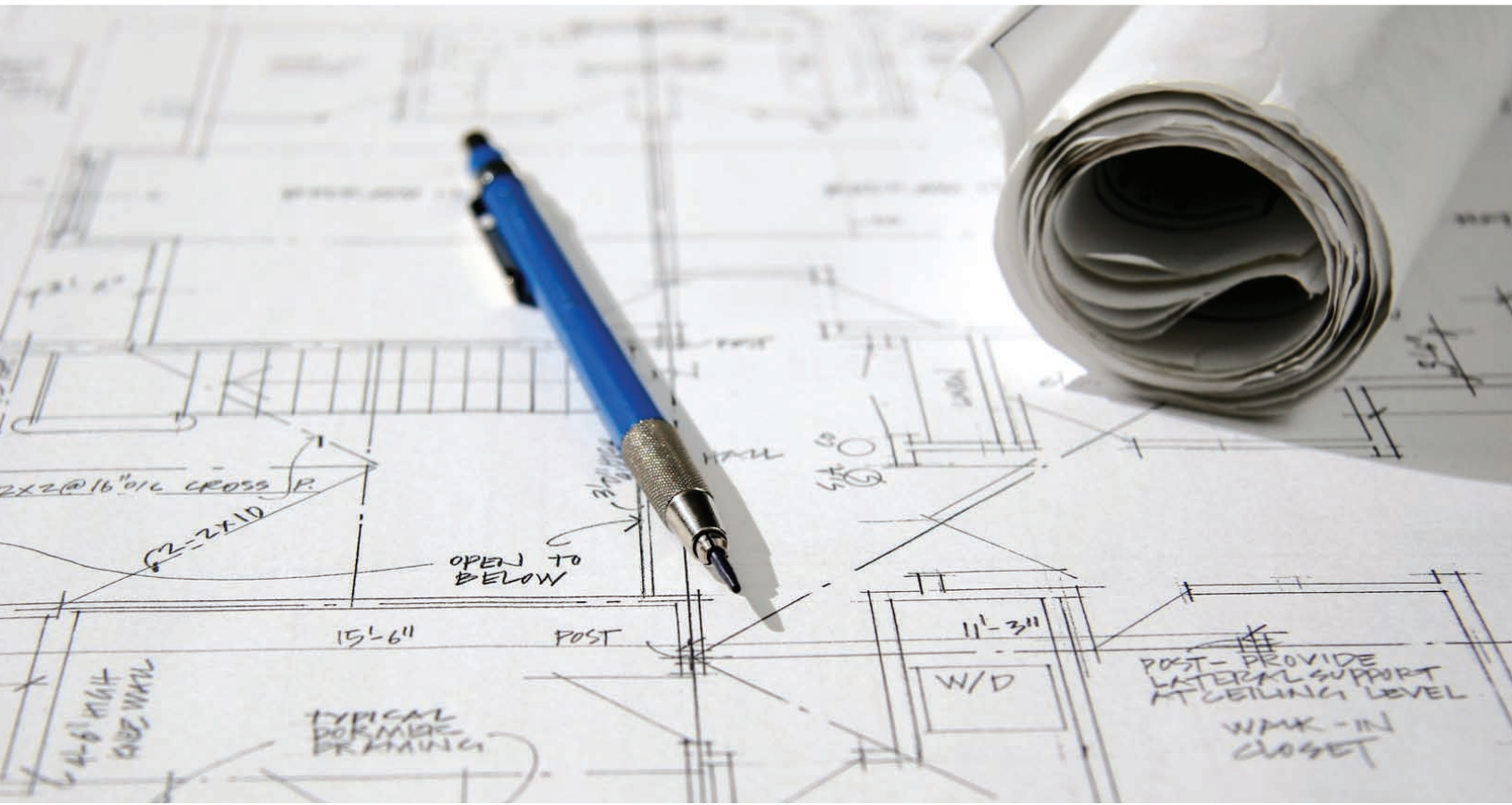


Acoustic and Fire Assemblies

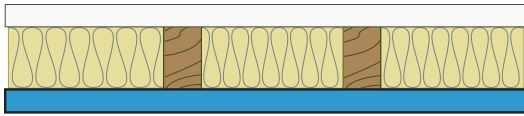
Product Selection Guide



Distributed in Canada by:

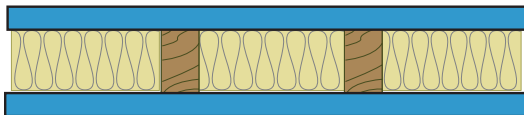


Single Wood Stud Walls



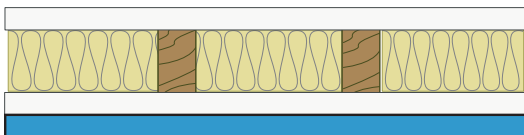
- QuietRock on one side
- 2x4 wood studs spaced 610 mm (24") OC with 89 mm (3-1/2") batt insulation
- 16 mm (5/8") Type X on the other

	STC	Fire	UL/ULC Design #	STC Report #	Panel thickness	Assembly Thickness
QR 510	49	-	-	TL07-021	13 mm (1/2")	118 mm (4-5/8")
QR 516**	46	-	-	TL07-113	13 mm (1/2")	114 mm (4-1/2")
QR ES	48	UL, 1 hour	U309 ¹	OL09-0825	16 mm (5/8")	121 mm (4-3/4")
QR 525	51	UL, 1 hour	U386, W317	TL07-019	16 mm (5/8")	121 mm (4-3/4")
QR 527	48	UL, 1 hour	U309 ¹	TL09-248	16 mm (5/8")	121 mm (4-3/4")
QR 530	52	UL, 1 hour	U309 ¹ , U376 ¹ , U386, W313 ¹ , W317	B3414.5	16 mm (5/8")	121 mm (4-3/4")
QR 545 THX	56	-	-	est.	35 mm (1-3/8")	140 mm (5-1/2")



- QuietRock on both sides
- 2x4 wood studs spaced 610 mm (24") OC with 89 mm (3-1/2") batt insulation

	STC	Fire	UL/ULC Design #	STC Report #	Panel thickness	Assembly Thickness
QR 510	52	-	-	TL07-022	13 mm (1/2")	114 mm (4-1/2")
QR 516**	49	-	-	TL07-112	13 mm (1/2")	114 mm (4-1/2")
QR ES	52	UL, 1 hour	U309 ¹	OL09-0824	16 mm (5/8")	121 mm (4-3/4")
QR 525	55	-	-	TL07-020	16 mm (5/8")	121 mm (4-3/4")
QR 527	52	UL, 1 hour	U309 ¹	est.	16 mm (5/8")	121 mm (4-3/4")
QR 530	54	UL, 1 hour	U376 ¹ , W313 ¹	B3414.4	16 mm (5/8")	121 mm (4-3/4")
QR 545 THX	60	-	-	B3433-4W	35 mm (1-3/8")	159 mm (6-1/4")



- QuietRock over 16 mm (5/8") Type X on one side
- 2x4 wood studs spaced 610 mm (24") OC with 89 mm (3-1/2") batt insulation
- 16 mm (5/8") Type X on the other

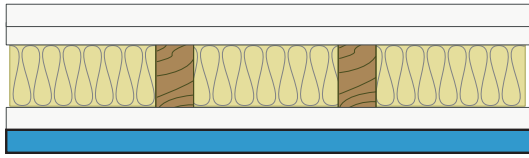
	STC	Fire	UL/ULC Design #	STC Report #	Panel thickness	Assembly Thickness
QR 510*	47	UL, 1 hour	U309 ¹	TL06-133	13 mm (1/2")	127 mm (5")
QR 516**	45	1 hour	-	est.	13 mm (1/2")	127 mm (5")
QR ES	47	UL, 1 hour	U309 ¹	est.	16 mm (5/8")	137 mm (5-3/8")
QR 525	49	UL, 1 hour	U386, W317	B3440.1	16 mm (5/8")	137 mm (5-3/8")
QR 527	47	UL, 1 hour	U309 ¹	est.	16 mm (5/8")	137 mm (5-3/8")
QR 530	53	UL, 1 hour	U309 ¹ , U376 ¹ , U386, W313 ¹ , W317	B3414.6	16 mm (5/8")	137 mm (5-3/8")
QR 545 THX	58	1 hour	-	est.	35 mm (1-3/8")	156 mm (6-1/8")

QuietRock sound damping drywall and other acoustical products available from Serious Materials. Visit www.QuietRock.com for more information.

¹ Load bearing wall assembly. *STC ratings for QuietRock 510 on retrofit wood stud construction are given on 13 mm (1/2") gypsum panels. ** STC ratings for QuietRock 516 products are given on 406 mm (16") OC wood construction.

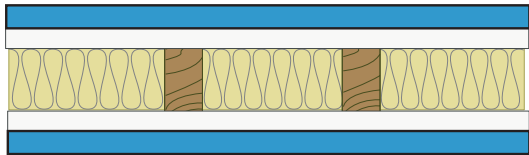
The information contained in this document is for general information purposes only. Features and specifications are subject to change. The diagrams and stated STC ratings listed are intended to serve as a guide. Construction practices have an influence on final STC ratings. Serious Materials cannot guarantee actual STC ratings. Flanking sound patterns, the integrity of the wall, and floor and ceiling construction are important factors in effective sound control.

Single Wood Stud Walls



- QuietRock over 16 mm (5/8") Type X on one side
- 2x4 wood studs spaced 610 mm (24") OC with 89 mm (3-1/2") batt insulation
- 2 layers 16 mm (5/8") Type X on the other

	STC	Fire	UL/ULC Design #	STC Report #	Panel thickness	Assembly Thickness
QR 510*	49	UL, 1 hour	U309 ¹	est.	13 mm (1/2")	140 mm (5-1/2")
QR 516**	47	1 hour	-	est.	13 mm (1/2")	140 mm (5-1/2")
QR ES	50	UL, 1 hour	U309 ¹	est.	16 mm (5/8")	152 mm (6")
QR 525	52	UL, 1 hour	U386, W317	est.	16 mm (5/8")	152 mm (6")
QR 527	50	UL, 1 hour	U309 ¹	est.	16 mm (5/8")	152 mm (6")
QR 530	55	UL, 1 hour	U309 ¹ , U376 ¹ , U386, W313 ¹ , W317	est.	16 mm (5/8")	152 mm (6")
QR 545 THX	60	1 hour	-	est.	35 mm (1-3/8")	162 mm (6-3/4")



- QuietRock over 16 mm (5/8") Type X on both sides
- 2x4 wood studs spaced 610 mm (24") OC with 89 mm (3-1/2") batt insulation

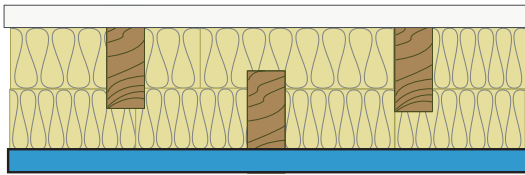
	STC	Fire	UL/ULC Design #	STC Report #	Panel thickness	Assembly Thickness
QR 510*	53	UL, 1 hour	U309 ¹	est.	13 mm (1/2")	140 mm (5-1/2")
QR 516**	50	1 hour	-	est.	13 mm (1/2")	140 mm (5-1/2")
QR 525	57	1 hour	-	est.	16 mm (5/8")	152 mm (6")
QR 530	58	UL, 1 hour	U309 ¹ , U376 ¹ , U386, W313 ¹ , W317	est.	16 mm (5/8")	152 mm (6")
QR 545 THX	63	1 hour	-	est.	35 mm (1-3/8")	191 mm (7-1/2")

QuietRock sound damping drywall and other acoustical products available from Serious Materials. Visit www.QuietRock.com for more information.

¹ Load bearing wall assembly. *STC ratings for QuietRock 510 on retrofit wood stud construction are given on 13 mm (1/2") gypsum panels. ** STC ratings for QuietRock 516 products are given on 406 mm (16") OC wood construction.

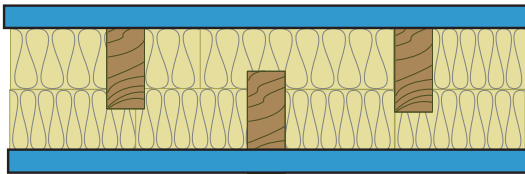
The information contained in this document is for general information purposes only. Features and specifications are subject to change. The diagrams and stated STC ratings listed are intended to serve as a guide. Construction practices have an influence on final STC ratings. Serious Materials cannot guarantee actual STC ratings. Flanking sound patterns, the integrity of the wall, and floor and ceiling construction are important factors in effective sound control.

Staggered Wood Stud Walls



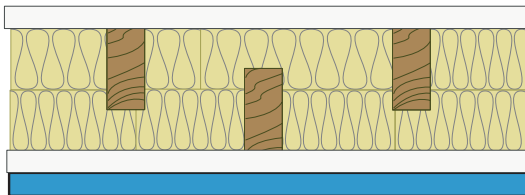
- QuietRock on one side
- 2x4 wood studs spaced 305 mm (12") OC on 152 mm (6") plates with 89 mm (3-1/2") minimum batt insulation
- 16 mm (5/8") Type X on the other

	STC	Fire	UL/ULC Design #	STC Report #	Panel thickness	Assembly Thickness
QR 510	55	-	-	est.	13 mm (1/2")	170 mm (6-5/8")
QR 525	57	UL, 1 hour	U386, W317	est.	16 mm (5/8")	171 mm (6-3/4")
QR 530	58	UL, 1 hour	U340 ¹ , U376 ¹ , U386, W313 ¹ , W317	est.	16 mm (5/8")	171 mm (6-3/4")
QR 545 THX	64	-	-	est.	35 mm (1-3/8")	191 mm (7-1/2")



- QuietRock on both sides
- 2x4 wood studs spaced 305 mm (12") OC on 152 mm (6") plates with 89 mm (3-1/2") minimum batt insulation

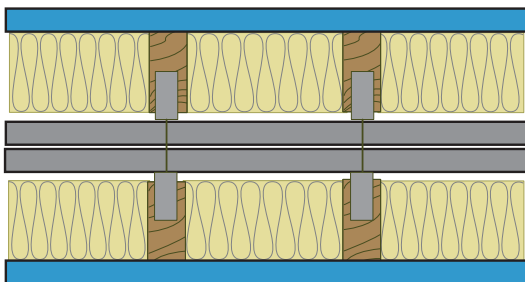
	STC	Fire	UL/ULC Design #	STC Report #	Panel thickness	Assembly Thickness
QR 510	58	-	-	est.	13 mm (1/2")	165 mm (6-1/2")
QR 525	61	-	-	B3440.4	16 mm (5/8")	171 mm (6-3/4")
QR 530	62	UL, 1 hour	U340 ¹ , U376 ¹ , W313 ¹	est.	16 mm (5/8")	171 mm (6-3/4")
QR 545 THX	68	-	-	est.	35 mm (1-3/8")	210 mm (8-1/4")



- QuietRock over 16 mm (5/8") Type X on one side
- 2x4 wood studs spaced 305 mm (12") OC on 152 mm (6") plates with 89 mm (3-1/2") minimum batt insulation
- 16 mm (5/8") Type X on the other

	STC	Fire	UL/ULC Design #	STC Report #	Panel thickness	Assembly Thickness
QR 510	58	UL, 1 hour	U340 ¹	est.	13 mm (1/2")	184 mm (7-1/4")
QR 525	60	UL, 1 hour	U386, W317	est.	16 mm (5/8")	187 mm (7-3/8")
QR 530	61	UL, 1 hour	U340 ¹ , U376 ¹ , U386, W313 ¹ , W317	est.	16 mm (5/8")	187 mm (7-3/8")
QR 545 THX	66	1 hour	-	est.	35 mm (1-3/8")	206 mm (8-1/8")

Two Hour Separation Wall



- One layer of QuietRock on both outer walls
- 25 mm (1") fire-shield shaft liner material both sides
- Double 2x4 wood studs spaced 406 mm (16") OC with 89 mm (3-1/2") batt insulation on both sides

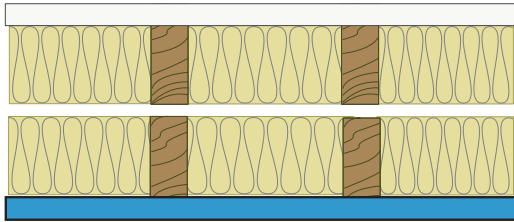
	STC	Fire	UL/ULC Design #	STC Report #	Panel thickness	Assembly Thickness
QR 510	69	UL, 2 hours	U347 ¹	TL07-119	13 mm (1/2")	292 mm (11-1/2")
QR 525	70	UL, 2 hours	U347 ¹	TL07-120	16 mm (5/8")	298 mm (11-3/4")

QuietRock sound damping drywall and other acoustical products available from Serious Materials. Visit www.QuietRock.com for more information.

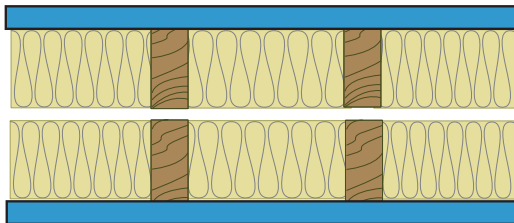
¹ Load bearing wall assembly. *STC ratings for QuietRock 510 on retrofit wood stud construction are given on 13 mm (1/2") gypsum panels. ** STC ratings for QuietRock 516 products are given on 406 mm (16") OC wood construction.

The information contained in this document is for general information purposes only. Features and specifications are subject to change. The diagrams and stated STC ratings listed are intended to serve as a guide. Construction practices have an influence on final STC ratings. Serious Materials cannot guarantee actual STC ratings. Flanking sound patterns, the integrity of the wall, and floor and ceiling construction are important factors in effective sound control.

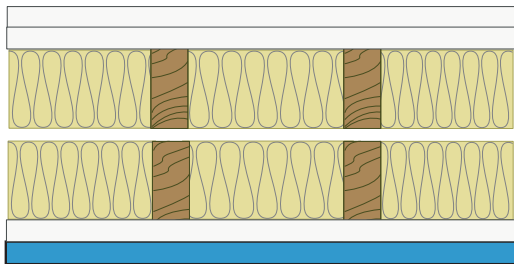
Double Wood Stud Walls



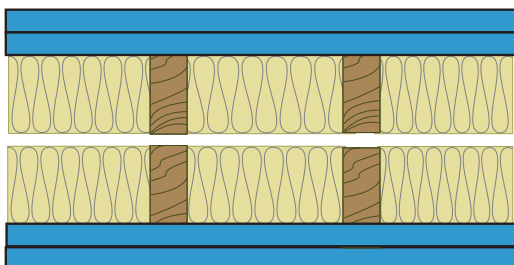
- QuietRock on one side
- 2x4 wood studs spaced 610 mm (24") OC, 25 mm (1") min. air gap with 89 mm (3-1/2") batt insulation on both sides
- 16 mm (5/8") Type X on the other



- QuietRock on both sides
- 2x4 wood studs spaced 610 mm (24") OC, 25 mm (1") min. air gap with 89 mm (3-1/2") batt insulation on both sides



- QuietRock on one side
- 2x4 wood studs spaced 610 mm (24") OC, 25 mm (1") min. air gap with 89 mm (3-1/2") batt insulation on both sides
- 2 layers 16 mm (5/8") Type X on the other



- Double layer QuietRock on both sides
- 2x4 wood studs spaced 610 mm (24") OC, 25 mm (1") min. air gap with 89 mm (3-1/2") batt insulation on both sides

	STC	Fire	UL/ULC Design #	STC Report #	Panel thickness	Assembly Thickness
QR 510	62	-	-	est.	13 mm (1/2")	229 mm (9")
QR 516**	62	-	-	est.	13 mm (1/2")	229 mm (9")
QR 525	63	UL, 1 hour	U386, W317	est.	16 mm (5/8")	235 mm (9-1/4")
QR 530	64	UL, 1 hour	U341 ¹ , U376 ¹ , U386, W313 ¹ , W317	est.	16 mm (5/8")	235 mm (9-1/4")
QR 545 THX	71	-	-	est.	35 mm (1-3/8")	254 mm (10")

	STC	Fire	UL/ULC Design #	STC Report #	Panel thickness	Assembly Thickness
QR 510	63	-	-	est.	13 mm (1/2")	229 mm (9")
QR 516**	64	-	-	est.	13 mm (1/2")	229 mm (9")
QR 525	65	-	-	B3440.3 ²	16 mm (5/8")	235 mm (9-1/4")
QR 530	66	UL, 1 hour	U341 ¹ , U376 ¹ , W313 ¹	B3414-1 ²	16 mm (5/8")	235 mm (9-1/4")
QR 545 THX	75	-	-	B3433.1W ²	35 mm (1-3/8")	273 mm (10-3/4")

	STC	Fire	UL/ULC Design #	STC Report #	Panel thickness	Assembly Thickness
QR 510*	69	UL, 1 hour	U341 ¹	est.	13 mm (1/2")	264 mm (10-3/8")
QR 516**	70	1 hour	-	est.	13 mm (1/2")	264 mm (10-3/8")
QR 525	71	UL, 1 hour	U386, W317	est.	16 mm (5/8")	267 mm (10-1/2")
QR 530	72	UL, 1 hour	U341 ¹ , U376 ¹ , U386, W313 ¹ , W317	est.	16 mm (5/8")	267 mm (10-1/2")
QR 545 THX	77	1 hour	-	est.	35 mm (1-3/8")	286 mm (11-1/4")

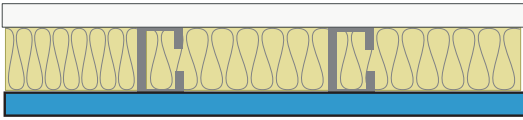
	STC	Fire	UL/ULC Design #	STC Report #	Panel thickness	Assembly Thickness
QR 510	71	-	-	est.	13 mm (1/2")	254 mm (10")
QR 516**	72	-	-	est.	13 mm (1/2")	254 mm (10")
QR 525	73	-	-	est.	16 mm (5/8")	267 mm (10-1/2")
QR 530	74	UL, 1 hour	U341 ¹ , U376 ¹ , W313 ¹	B3414.2 ²	16 mm (5/8")	267 mm (10-1/2")
QR 545 THX	80	-	-	B3433-4W ²	35 mm (1-3/8")	343 mm (13-1/2")

QuietRock sound damping drywall and other acoustical products available from Serious Materials. Visit www.QuietRock.com for more information.

¹ Load bearing wall assembly. *STC ratings for QuietRock 510 on retrofit wood stud construction are given on 13 mm (1/2") gypsum panels. ** STC ratings for QuietRock 516 products are given on 406 mm (16") OC wood construction. ²Tested with a 76 mm (3") air gap.

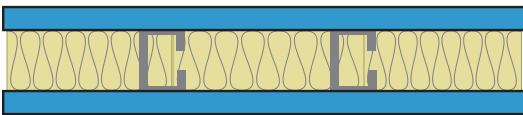
The information contained in this document is for general information purposes only. Features and specifications are subject to change. The diagrams and stated STC ratings listed are intended to serve as a guide. Construction practices have an influence on final STC ratings. Serious Materials cannot guarantee actual STC ratings. Flanking sound patterns, the integrity of the wall, and floor and ceiling construction are important factors in effective sound control.

Single Steel Stud Walls



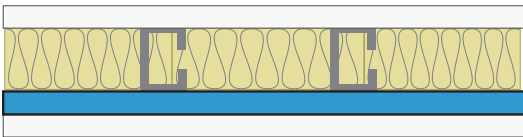
- QuietRock on one side
- 92 mm (3-5/8") 25-ga. steel studs spaced 610 mm (24") OC with 89 mm (3-1/2") batt insulation
- 16 mm (5/8") Type X on the other

	STC	Fire	UL/ULC Design #	STC Report #	Panel thickness	Assembly Thickness
QR 510	53	-	-	est.	13 mm (1/2")	118 mm (4-5/8")
QR ES	52	UL, 1 hour	U465	OL09-0821	16 mm (5/8")	124 mm (4-7/8")
QR 525	55	-	-	TL07-028	16 mm (5/8")	124 mm (4-7/8")
QR 527	55	UL, 1 hour	W460, V463, W459, V464, U465	TL07-069	16 mm (5/8")	124 mm (4-7/8")
QR 545 THX	62	-	-	est.	35 mm (1-3/8")	143 mm (5-5/8")



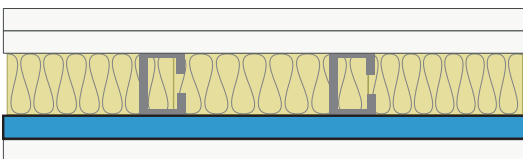
- QuietRock on both sides
- 92 mm (3-5/8") 25-ga. steel studs spaced 610 mm (24") OC with 89 mm (3-1/2") batt insulation

	STC	Fire	UL/ULC Design #	STC Report #	Panel thickness	Assembly Thickness
QR 510	55	-	-	est.	13 mm (1/2")	118 mm (4-5/8")
QR ES	55	UL, 1 hour	U465	OL09-0820	16 mm (5/8")	124 mm (4-7/8")
QR 525	57	-	-	TL07-029	16 mm (5/8")	124 mm (4-7/8")
QR 527	56	UL, 1 hour	W460, V463, W459, V464, U465	TL07-076	16 mm (5/8")	124 mm (4-7/8")
QR 545 THX	66	-	-	est.	35 mm (1-3/8")	162 mm (6-3/8")



- 16 mm (5/8") Type X over QuietRock on one side
- 92 mm (3-5/8") 25-ga. steel studs spaced 610 mm (24") OC with 89 mm (3-1/2") batt insulation
- 16 mm (5/8") Type X on the other

	STC	Fire	UL/ULC Design #	STC Report #	Panel thickness	Assembly Thickness
QR 510	54	UL, 1 hour	U465, U473	TL07-030	13 mm (1/2")	137 mm (5-3/8")
QR 525	59	1 hour	-	est.	16 mm (5/8")	140 mm (5-1/2")
QR 527	59	UL, 1 hour	W460, V463, W459, V464, U465	est.	16 mm (5/8")	140 mm (5-1/2")
QR 545 THX	65	1 hour	-	est.	35 mm (1-3/8")	159 mm (6-1/4")



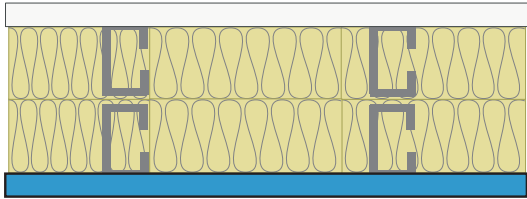
- 16 mm (5/8") Type X over QuietRock on one side
- 92 mm (3-5/8") 25-ga. steel studs spaced 610 mm (24") OC with 89 mm (3-1/2") batt insulation
- 2 layers 16 mm (5/8") Type X on the other

	STC	Fire	UL/ULC Design #	STC Report #	Panel thickness	Assembly Thickness
QR 510	56	UL, 1 hour	U465, U473	TL07-031	13 mm (1/2")	152 mm (6")
QR 525	62	1 hour	-	est.	16 mm (5/8")	156 mm (6-1/8")
QR 527	62	UL, 1 or 2 hour	W460, V463, W459, V464, V419, U465	est.	16 mm (5/8")	156 mm (6-1/8")
QR 545 THX	67	1 hour	-	est.	35 mm (1-3/8")	175 mm (6-7/8")

QuietRock sound damping drywall and other acoustical products available from Serious Materials. Visit www.QuietRock.com for more information.

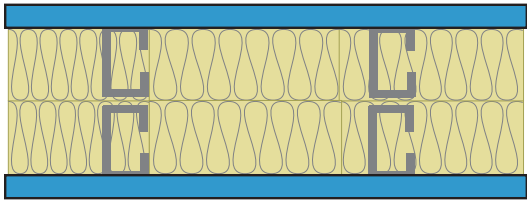
The information contained in this document is for general information purposes only. Features and specifications are subject to change. The diagrams and stated STC ratings listed are intended to serve as a guide. Construction practices have an influence on final STC ratings. Serious Materials cannot guarantee actual STC ratings. Flanking sound patterns, the integrity of the wall, and floor and ceiling construction are important factors in effective sound control.

Double Steel Stud Walls



- QuietRock on one side
- 92 mm (3-5/8") 25-ga. steel studs spaced 610 mm (24") OC, 25 mm (1") min air gap with 89 mm (3-1/2") batt insulation
- 16 mm (5/8") Type X on the other

	STC	Fire	UL/ULC Design #	STC Report #	Panel thickness	Assembly Thickness
QR 510	62	-	-	est.	13 mm (1/2")	229 mm (9")
QR 525	64	-	-	est.	16 mm (5/8")	235 mm (9-1/4")
QR 527	64	UL, 1 hour	W460, V463, W459, V464	TL07-392	16 mm (5/8")	235 mm (9-1/4")
QR 545 THX	70	-	-	est.	35 mm (1-3/8")	254 mm (10")



- QuietRock on both sides
- 92 mm (3-5/8") 25-ga. steel studs spaced 610 mm (24") OC, 25 mm (1") min air gap with 89 mm (3-1/2") batt insulation

	STC	Fire	UL/ULC Design #	STC Report #	Panel thickness	Assembly Thickness
QR 510	63	-	-	est.	13 mm (1/2")	229 mm (9")
QR 525	65	-	-	est.	16 mm (5/8")	235 mm (9-1/4")
QR 527	65	UL, 1 hour	W460, V463, W459, V464	TL07-391	16 mm (5/8")	235 mm (9-1/4")
QR 545 THX	75	-	-	est.	35 mm (1-3/8")	273 mm (10-3/4")

QuietRock sound damping drywall and other acoustical products available from Serious Materials. Visit www.QuietRock.com for more information.

The information contained in this document is for general information purposes only. Features and specifications are subject to change. The diagrams and stated STC ratings listed are intended to serve as a guide. Construction practices have an influence on final STC ratings. Serious Materials cannot guarantee actual STC ratings. Flanking sound patterns, the integrity of the wall, and floor and ceiling construction are important factors in effective sound control.

The information contained in this document is for general information purposes only. Features and specifications are subject to change. The diagrams and stated STC ratings listed are intended to serve as a guide. Construction practices have an influence on final STC ratings. Serious Materials cannot guarantee actual STC ratings. Flanking sound patterns, the integrity of the wall, and floor and ceiling construction are important factors in effective sound control.



Professional: 800-233-8990 • Consumer: 800-782-8777

Printed in Canada on recycled paper. ♻️ March 2010 CTG-2801

Distributed in Canada by:

CertainTeed
SAINT-GOBAIN