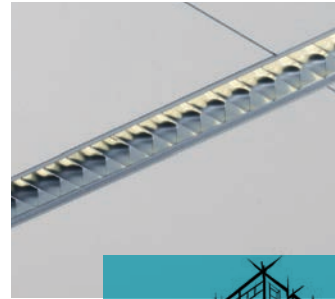


Rockfon® Module

Easily design and create ceiling layouts featuring linear lighting integrated with standard and custom ceiling panels.



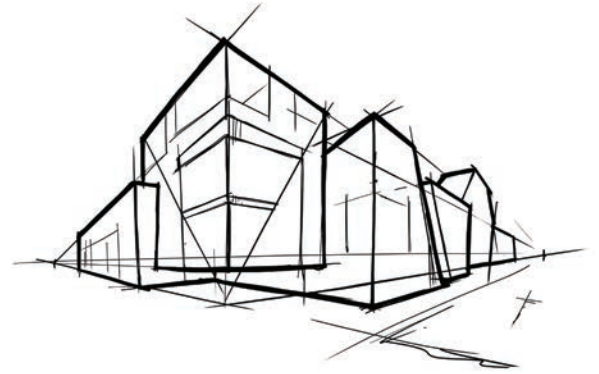
Rockfon Module – Stunning Design. Seamless Installation.

Easily combine our standard grid profiles, field panels, and specialty sized technical panels for seamless integration of linear light fixtures.

Visit rockfon.com or email techservices@rockfon.com today to discover how Rockfon Module can elevate design and simplify installation.



Inspirational Module Ceiling Layouts



A Modern Look for Every Space

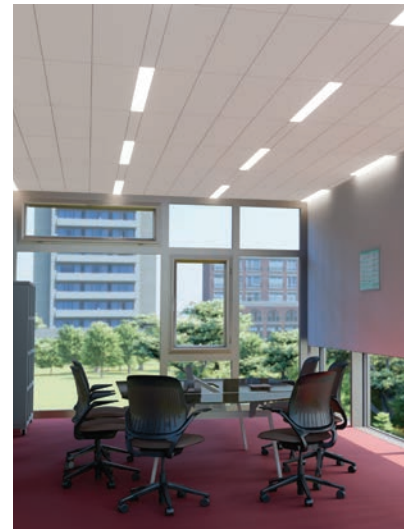
The Rockfon Module system is ideal for any area that requires a clean, modern aesthetic. The use of our smooth or lightly textured, white Rockfon panels with one of our many grid profiles ensures a consistent, clean modern look.

4" Module

- 4" Module Cross Tee
- 12" x 48" Module Technical Panel
- 4" x 48" Module Technical Panel
- Field perpendicular to Module



- 4" Module Cross Tee
- 12" x 48" Module Technical Panel
- 4" x 48" Module Technical Panel
- Field parallel to Module



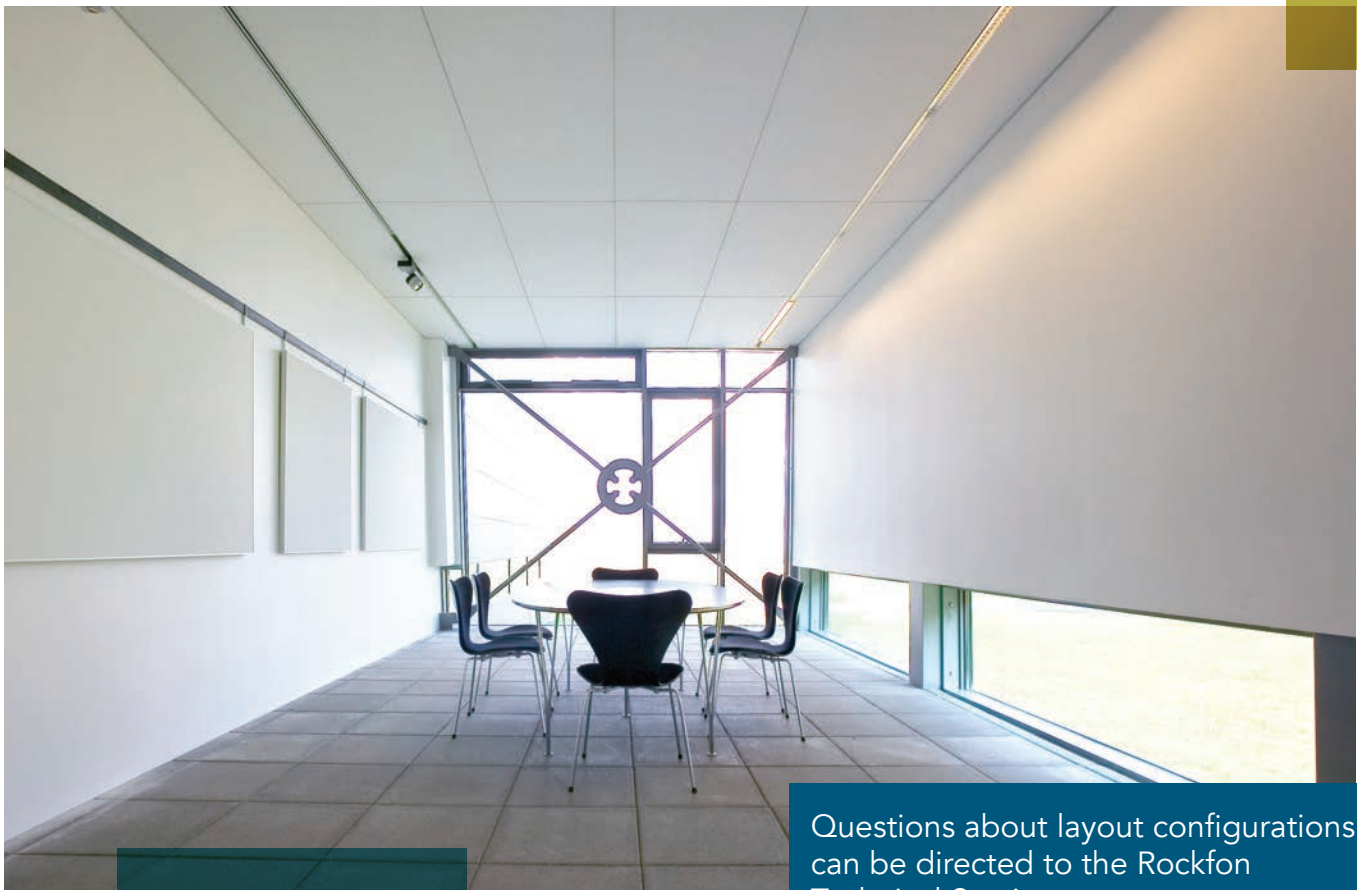
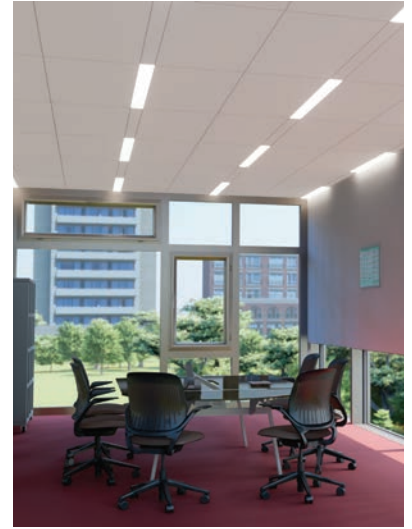
- 4" Module Cross Tee
- 24" x 24" Field Panels
- 4" x 48" Module Technical Panel



- 4" Module Cross Tee
- 24" x 48" Field Panels
- 4" x 48" Module Technical Panel
- Field perpendicular to Module



- 4" Module Cross Tee
- 24" x 48" Field Panels
- 4" x 48" Module Technical Panel
- Field parallel to Module



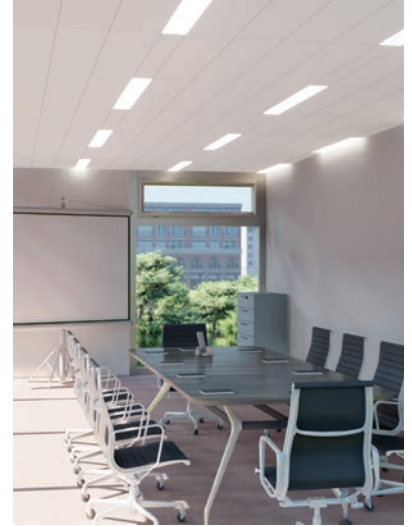
Questions about layout configurations can be directed to the Rockfon Technical Services team – contact techservices@rockfon.com

6" Module

- 6" Module Cross Tee
- 12" x 48" Module Technical Panel
- 6" x 48" Module Technical Panel
- Field perpendicular to Module



- 6" Module Cross Tee
- 12" x 48" Module Technical Panel
- 6" x 48" Module Technical Panel
- Field parallel to Module



- 6" Module Cross Tee
- 24" x 24" Field Panels
- 6" x 48" Module Technical Panel



- 6" Module Cross Tee
- 24" x 48" Field Panels
- 6" x 48" Module Technical Panel
- Field perpendicular to Module

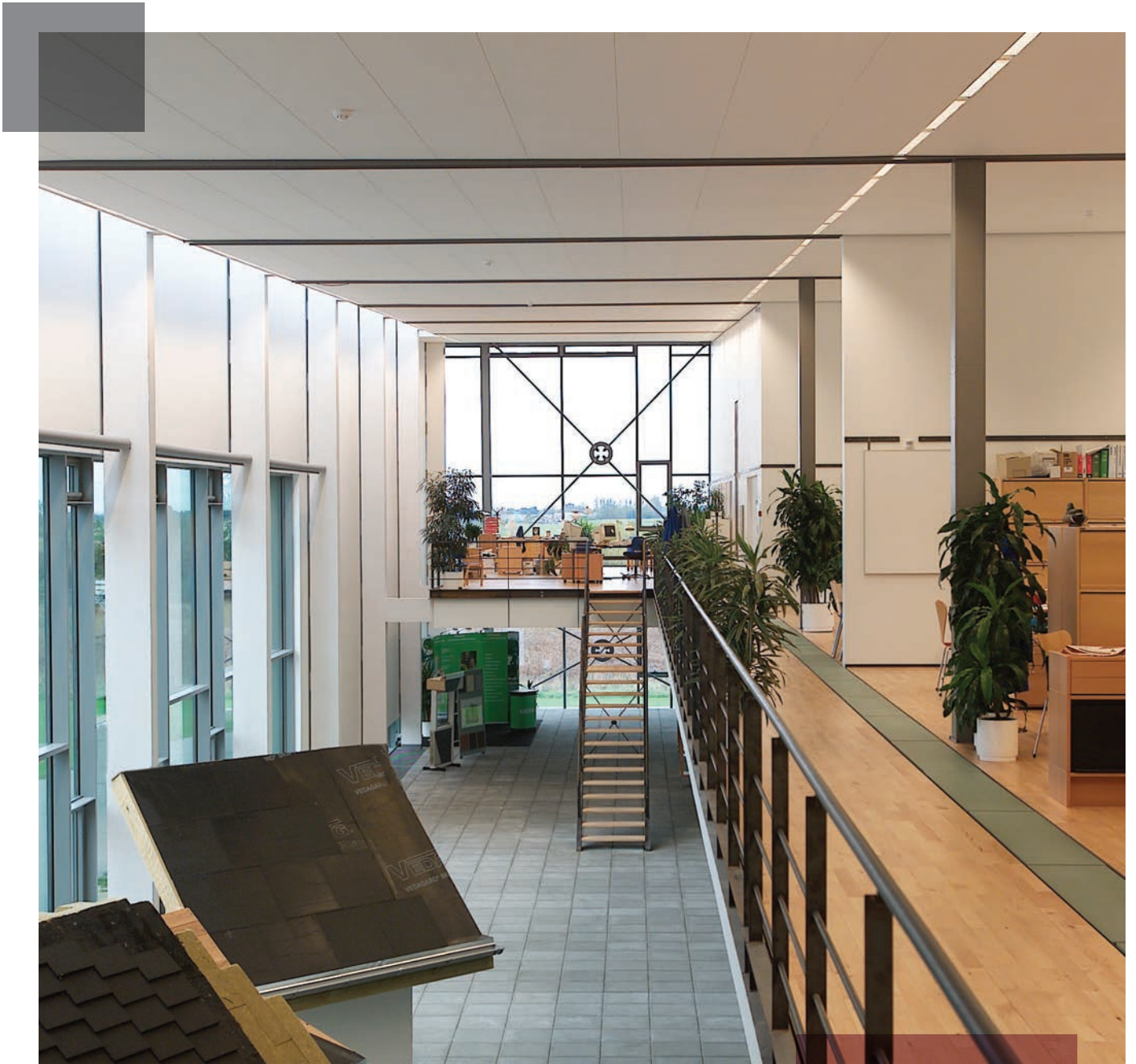


- 6" Module Cross Tee
- 24" x 48" Field Panels
- 6" x 48" Module Technical Panel
- Field parallel to Module



- Standard Grid Components
- 24" x 24" Field Panels
- 6" x 48" Module Technical Panel



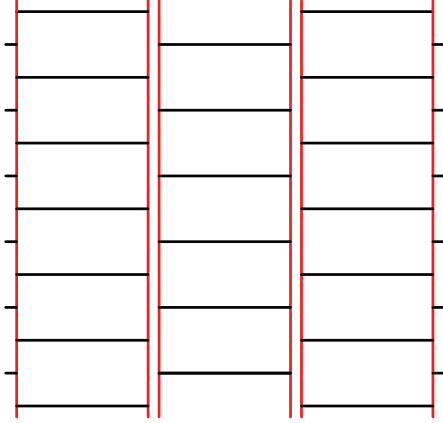


Questions about layout configurations
can be directed to the Rockfon
Technical Services team – contact
techservices@rockfon.com

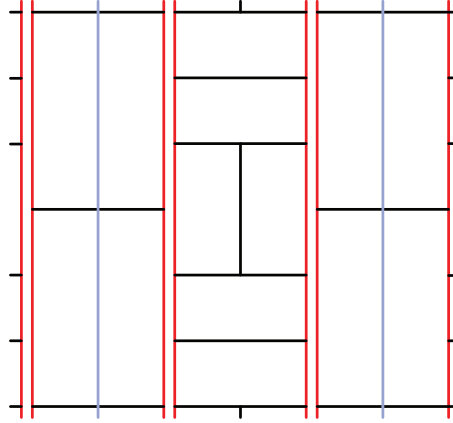
Design Inspiration

For additional design inspiration, please reference our Staggered Pattern Layout Brochure.

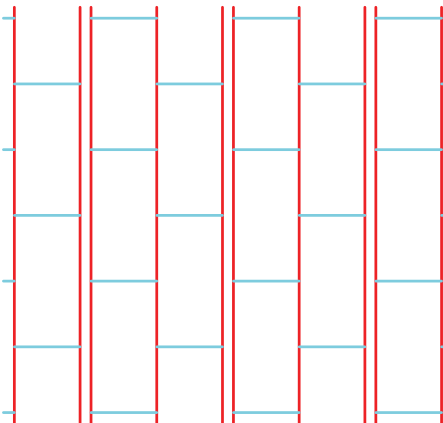
Staggered Pattern



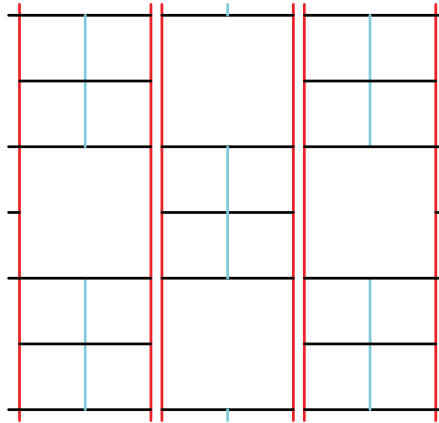
Running Basket Weave Pattern



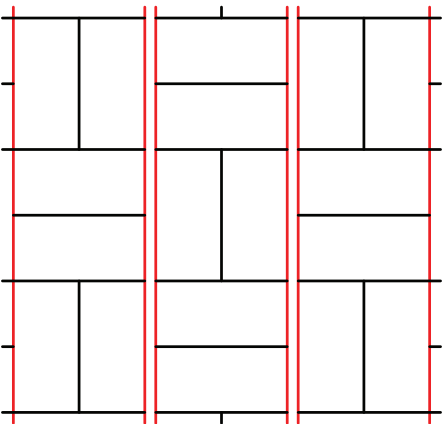
Brick Pattern



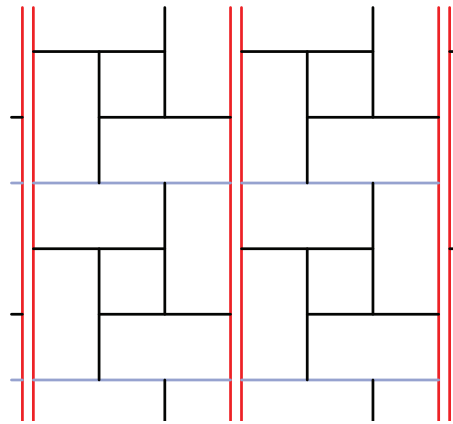
Check Pattern



Basket Weave Pattern



Rose Pattern



Grid Key

- 24" Cross tees
- 48" Cross tees
- 72" Cross tees
- 12' Main runner



EXIT
EXIT

EXIT

Rockfon Field and Module Technical Panel Options

The Rockfon Module system is comprised of standard size field panels and specialty sized technical panels which integrate with designs featuring linear light fixtures. First, select the stone wool panel system that best fits your aesthetic and acoustic needs. Then select your edge type: tegular, concealed, or semi-concealed.

Tegular systems are comprised of all stone wool panels. Concealed and semi-concealed systems utilize stone wool field panels and metal module panels which are listed below listed below.

Ceiling Panel Options

Rockfon Sonar®

- Elegant lightly-textured white surface
- High sound absorption (NRC = 0.90 - 0.95)
- High light reflectance (LR = 0.85)
- Available in the following panel sizes:
2' x 2' | 2' x 4' | 2' x 5' | 2' x 6' | 2' x 8'

Rockfon Alaska®

- Elegant smooth white surface
- High sound absorption (NRC = 0.90)
- High light reflectance (LR = 0.86)
- Available in the following panel sizes:
2' x 2' | 2' x 4' | 2' x 5' | 2' x 6'





Metal Module panels for CDX/SCD

- 0.04" aluminum
- Install below the suspension
- Bendable locking tabs firmly hold the metal Module panels to the suspension system
- Custom Metal Module panel options available through Technical Services

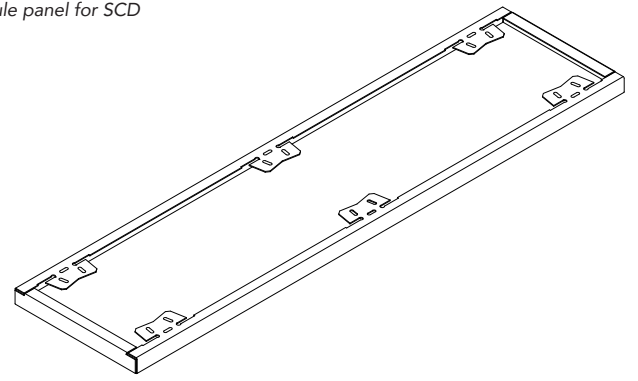
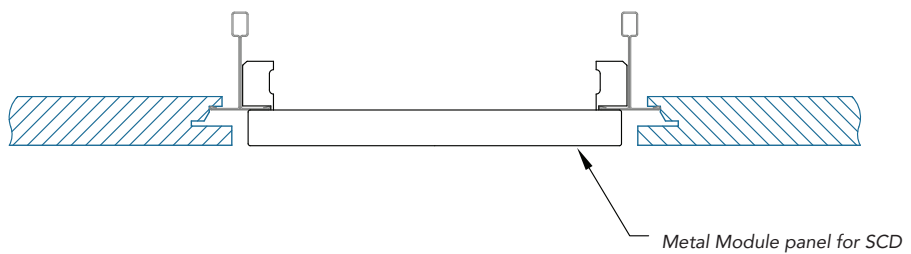
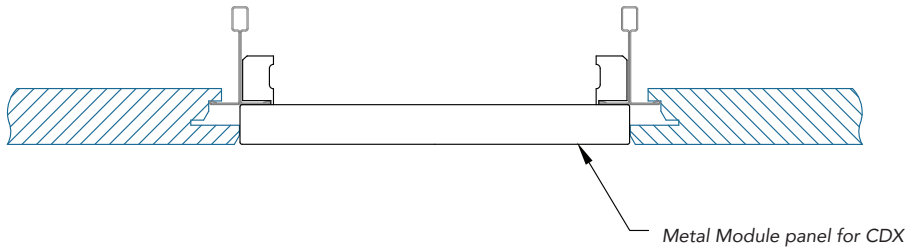


Lay-in Panels	Panel Size	Sonar®		Alaska®	
					
		15/16" Angled Tegular	9/16" Square Tegular Narrow	15/16" Angled Tegular	9/16" Square Tegular Narrow
Field Panels	2' x 2'	16300	16200	10300	10200
	2' x 4'	16301	16201	10301	10201
	2' x 5'	16302	16202	10302	10202
	2' x 6'	16303	16203	10303	10203
	2' x 8'	16304	16204	-	-
Module Technical Panels	4" x 24"	16320	16220	10320	10220
	4" x 48"	16330	16230	10330	10230
	6" x 24"	16321	16221	10321	10221
	6" x 48"	16331	16231	10331	10231
	12" x 24"	16322	16222	10322	10222
	12" x 48"	16332	16232	10332	10232

For custom sized panels, contact Technical Services.

Concealed	Panel Size				
		Sonar® CDX	Sonar® SCD	Alaska® CDX	Alaska® SCD
Field Panels	2' x 2'	14600	14550	10600	10550
	2' x 4'	14601	14551	10601	10551
	2' x 5'	14602	14552	-	-
	2' x 6'	14603	14553	-	-
	2' x 8'	16604	16554	-	-
Metal Module Technical Panels* .040" Aluminum	4" x 24"	MDX04024	MDM04024	MDX04024	MDM04024
	4" x 48"	MDX04048	MDM04048	MDX04048	MDM04048
	6" x 24"	MDX06024	MDM06024	MDX06024	MDM06024
	6" x 48"	MDX06048	MDM06048	MDX06048	MDM06048
	12" x 24"	MDX12024	MDM12024	MDX12024	MDM12024
	12" x 48"	MDX12048	MDM12048	MDX12048	MDM12048

* Metal Module Panels are made to order. Custom colors and perforations available through Technical Services.



Chicago Metallic® Suspension System Options

Suspension System Options



Chicago Metallic
1200 Seismic



Chicago Metallic
4000 Tempra™



Chicago Metallic
4200 Integrity™

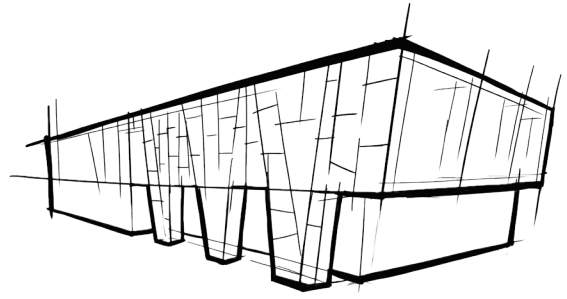
Face Width	15/16"	9/16"	9/16"
HD Main Runner Sizes			
144"	200.XXZ.01	4040.01	4200.01
Cross Tee Sizes			
4"	1211.01	4004.01	4211.01
6"	1212.01	4006.01	4212.01
24"	1202.01	4022.01	4202.01
48"	1210.01	4014.01	4204.01
48" HD	1274.01	–	–
60"	1207.01	4015.01	–
72"	1236.01	4017.01	4206.01
96"	1278.01	4018.01	4208.01

* Custom slotted main runners are available for each system. Requests can be directed to the Rockfon Technical Services team - contact techservices@rockfon.com. Reference the grid system datasheets for a full list of suspension components and details.

For product numbers and more information visit rockfon.com



Module System Perimeter Details



Hemmed Edge Wall Angles

Product Number	Nominal Dimensions		
	Face Width	Height	Length
1420.01	15/16"	15/16"	12'
1425.01	2"	2"	12'
1480.01	9/16"	15/16"	12'
1454.01	15/16"	-	10'



1420



1425



1480



1454

Hemmed Edge Shadow Line Moldings

Product Number	Nominal Dimensions		
	Flanges	Recess	Length
1468.01	3/4" x 15/16"	3/8" x 3/8"	10'
1469.01	9/16" x 15/16"	3/8" x 3/8"	10'



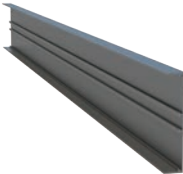
1468



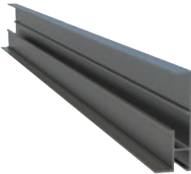
1469

Rockfon Infinity™ Perimeter Trim

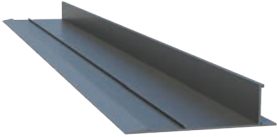
Perimeter Trim



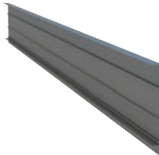
Infinity™



Infinity™ R
(Reveal)



Infinity™ Z
(Razor Edge)



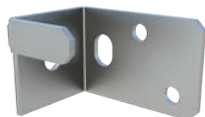
Infinity™
CDX/SCD

For product numbers
and more information
visit rockfon.com



Module System Accessories

Clips



1493.00
Unopposed Tee Clip

Enhance your design with the ability to create code-compliant staggered pattern layouts.



479.00
90 Degree Corner Clip

Increase the stability of your layouts with single cross tee connections.



1496.00
Seismic Perimeter Clip

Add additional seismic security to your system.



935.00
Hold Down Clip for
Various Panel Heights

Enable uplift resistance for field and technical panels.



490.00
Hold Down Clip Ideal
for 0" – 3/4" Panels

Enable uplift resistance for field and technical panels.



491.00
Hold Down Clip Ideal
for 3/4" – 1-1/4" Panels

Enable uplift resistance for field and technical panels.



MDY4.00
4" Yoke

Compatible with 4" light fixtures*



MDY6.00
6" Yoke

Compatible with 6" light fixtures*

* For custom sized yokes, please contact Technical Services.

To Learn More
Please visit rockfon.com, email techservices@rockfon.com or call **800-323-7164**.

Rockfon® is a registered trademark
of the ROCKWOOL Group.

2018 | Subject to alterations in range and product technology without prior notice. Rockfon accepts no responsibility for printing errors.
® ROCKWOOL International A/S 2018. All rights reserved. ® denotes a trademark that is registered in the United States of America.



Rockfon
4849 S. Austin Ave.
Chicago, IL 60638 USA

Tel. +1-800-323-7164
Fax. +1-800-222-3744
rockfon.com